

EVO

FOR ZENMUSE L1



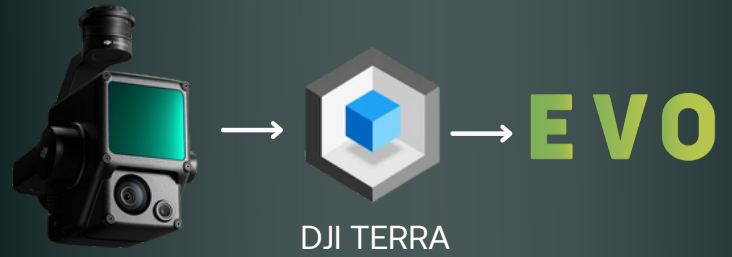
DJI ZENMUSE L1 WORKFLOW

This video tutorial will walk you through the DJI Zenmuse L1 data processing steps in TrueView EVO software. This video details highly relevant features that will raise your L1 data to new heights in terms of deliverables.



- Upgrade LAS from 1.2 to 1.4
- Manage an extensive list of coordinate systems
- Separate LAS file by flight lines
- Strip Alignment for geometric correction
- Smoothing tools
- Add GCPs for data QC
- Access other LP360 tools:
 - ground classification
 - volumetrics
 - feature analysis using point cloud navigation and image explorer
 - manage your photogrammetry processing

[WATCH VIDEO ON YOUTUBE](#)



[WATCH VIDEO ON YOUTUBE](#)

OVERVIEW AND CHAPTERS

- 00:00 - Introduction
- 00:47 - Benefits & Advantages of the L1
- 01:26 - How EVO compliments the L1 workflow
- 02:09 - Additional EVO Tools for Data Processing
- 02:30 - Demonstration of L1 Processing
- 03:00 - Import Mission & Terra Data
- 12:00 - Create Flight Lines
- 14:10 - Create True View Trajectories
- 15:55 - Update LAS Data from 1.2 to 1.4 (Geocoding)
- 19:50 - Other ways to look at Data
- 23:45 - Strip Align for EVO
- 30:13 - Utilize Tools for Data Smoothing
- 36:03 - Results of Data Smoothing
- 37:16 - Generate an Orthophoto from L1 imagery using Metashape for EVO
- 43:55 - Review Downstream Processing Tools of EVO
- 45:40 - Manage Coordinate System
- 46:35 - Summary Processing in EVO
- 47:04 - Use EVO to further process data and produce deliverables
- 47:30 - Contact Information

INTEGRATIONS

Metashape for EVO

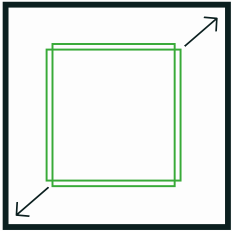


We have built interfaces directly into our drone mapping processing software, TrueView™ EVO, for driving both an embedded version of Metashape (Metashape for EVO), as well as the full GUI version of Metashape Professional. This design provides a seamless photogrammetric workflow for users of EVO processing software.

Metashape for EVO supports the generation of:

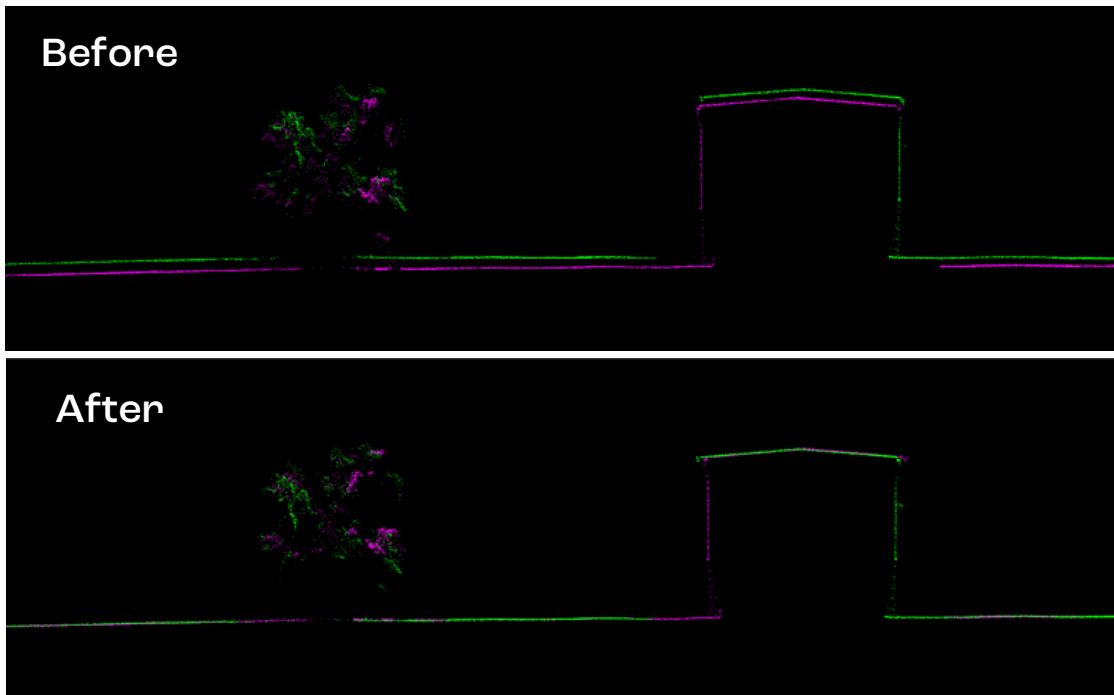
- Block bundle adjusted imagery, improving the positional accuracy
- Point clouds from imagery (“structure from motion”) – typically used in DJI camera workflows
- Orthomosaics

StripAlign for EVO



Data can exhibit small geometric inconsistencies, especially when combining data from multiple flights. StripAlign for EVO detects and corrects these errors via an application of sensor-specific mathematical modelling. EVO is a fully automated process with no need for users to set project-specific “tuning” parameters or to move in and out of the EVO processing environment – press a button and it works!

*Image Exaggerated to Display StripAlign Effect



L1 PROCESSING WITH EVO

DJI Zenmuse L1 Solutions

The Zenmuse L1 is DJI's first generation LiDAR system. When used with DJI Terra, the Zenmuse L1 gives you real-time 3D data, efficiently capturing structures and delivering accurate models. This entry-level system is a low-cost solution for users who are entering the surveying market.

DJI Zenmuse L1 + DJI Terra + TrueView EVO

There are many great reasons for combining the DJI hardware and software with the TrueView EVO software. EVO offers an integrated suite of software tools for improving and exploiting data collected from the Zenmuse L1.

Through EVO, users can also fly drone LiDAR missions using their own third-party L1/L2 base station.

Recommended Add-Ons: Metashape for EVO, StripAlign for EVO and TrueView Reckon Data Hosting Portal.

TrueView EVO

GeoCue's TrueView EVO software provides an integrated suite of software tools for exploiting point clouds gathered from a great variety of cloud collection methods. GeoCue software is widely known and has been used in Australia and around the world for decades. Now EVO is also available to assist owners of the Zenmuse L1, who require a more comprehensive surveying workflow.

Recommended Add-Ons: Metashape for EVO, StripAlign for EVO and TrueView Reckon Data Hosting Portal.

